

## BLACK BEAR

The black bear is one species that has fascinated man and been the subject of folklore throughout the centuries. Its range is throughout most of North America except the barren areas of Northern Canada and the desert areas of the South Western United States.

Although black is the predominant colour, shades of brown, cinnamon and blonde do occur.

Pelts are also separated into COM (complete) all claws and the head and INC (incomplete). The grades are the same for both categories.

### SIZE

XXXL	Over 330 cm	Over 130"
XXL	292-330 cm	115"-130"
XL	254-292 cm	100"-115"
LGE	216-254 cm	85"-100"
LM	178-216 cm	70"-85"
MED	152-178 cm	60"-70"
SM	Under 152 cm	Under 60"

### COLOUR

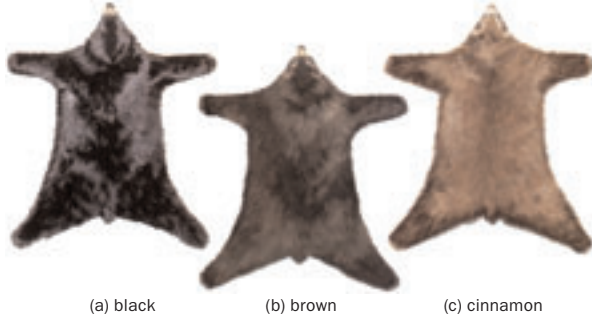
All colour phases of the black bear, brown and cinnamon are graded, lotted and sold separately.

### CATALOGUE SECTION I

CODE	GRADE	DEFINITION
SEL/I	SELECT/FIRST	Best possible quality, prime pelts. Full bodied, fully covered. Leather is clear. Fur and leather are free of imperfections.
I-II	FIRST AND SECOND	Fur lacking density, flatter pelt. Fur and leather are free of imperfections.
II	SECOND	Flat skins that have begun to shed. Fur and leather are free of imperfections.
SDG	SLIGHT DAMAGED	SDG (Gd.): SELECT or FIRST quality skins that are up to 10% damaged.  SDG (Av.): I-II and II quality skins that are up to 10% damaged.

### CATALOGUE SECTION III

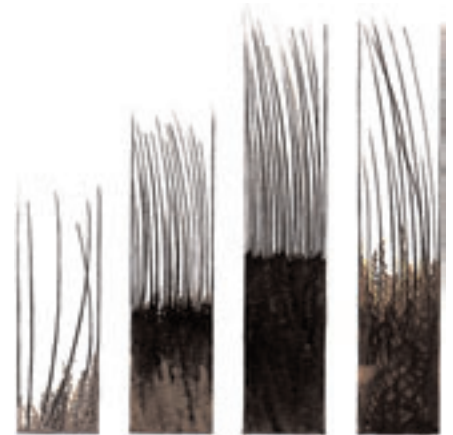
CODE	GRADE	DEFINITION
DGD	DAMAGED	DGD (Gd.): SELECT or FIRST quality skins that are up to 25% damaged.  DGD (Pr.): I-II and II quality skins that are up to 25% damaged. SEL and I quality skins that are up to 50% damaged.
III	THIRD	Very early or late pelts. Useful for claws or parts.
IV	FOURTH	Extremely early pelt with very little fur. Incomplete pelts with little commercial value.



**COLOUR CATEGORIES OF BLACK BEAR**



**PRIMING SEQUENCE OF BLACK BEAR**



**PRIMING SEQUENCE OF BLACK BEAR**